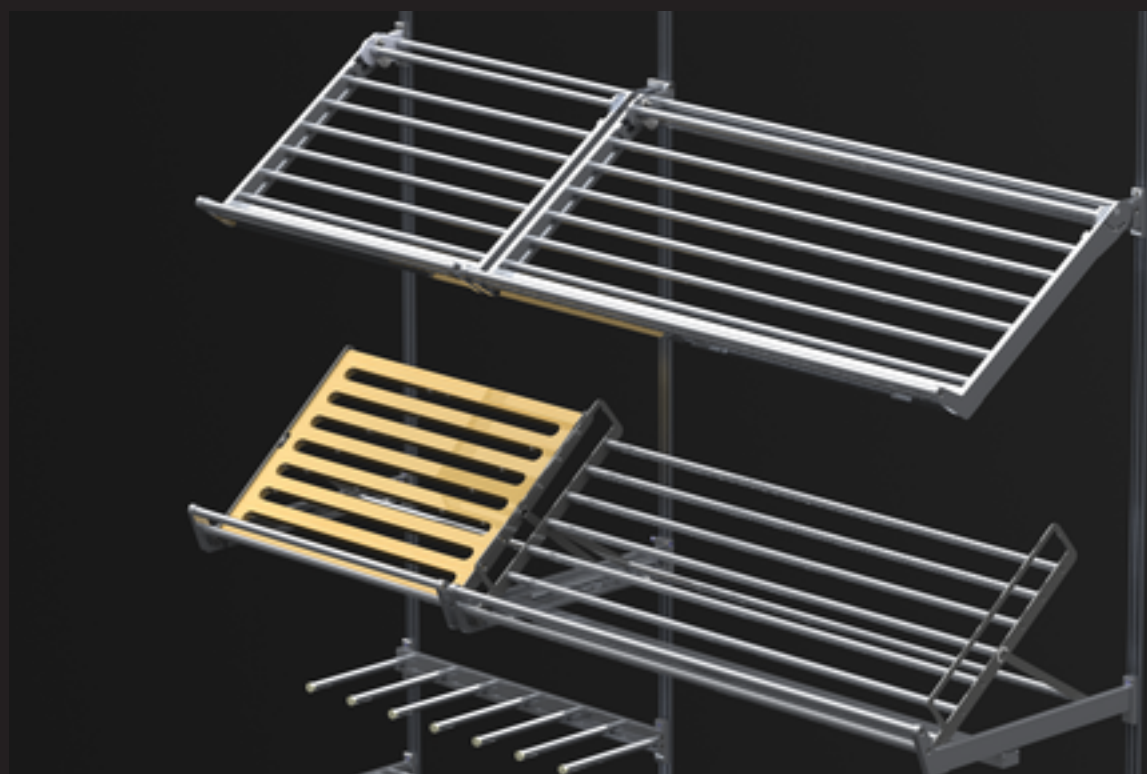


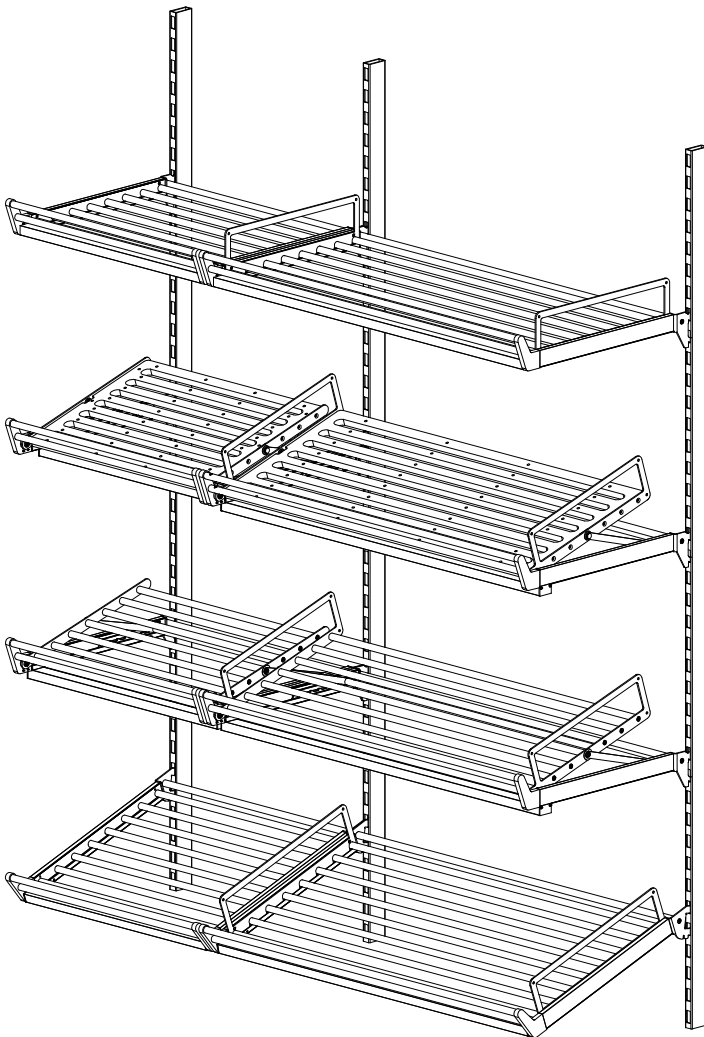
Bread grating 3

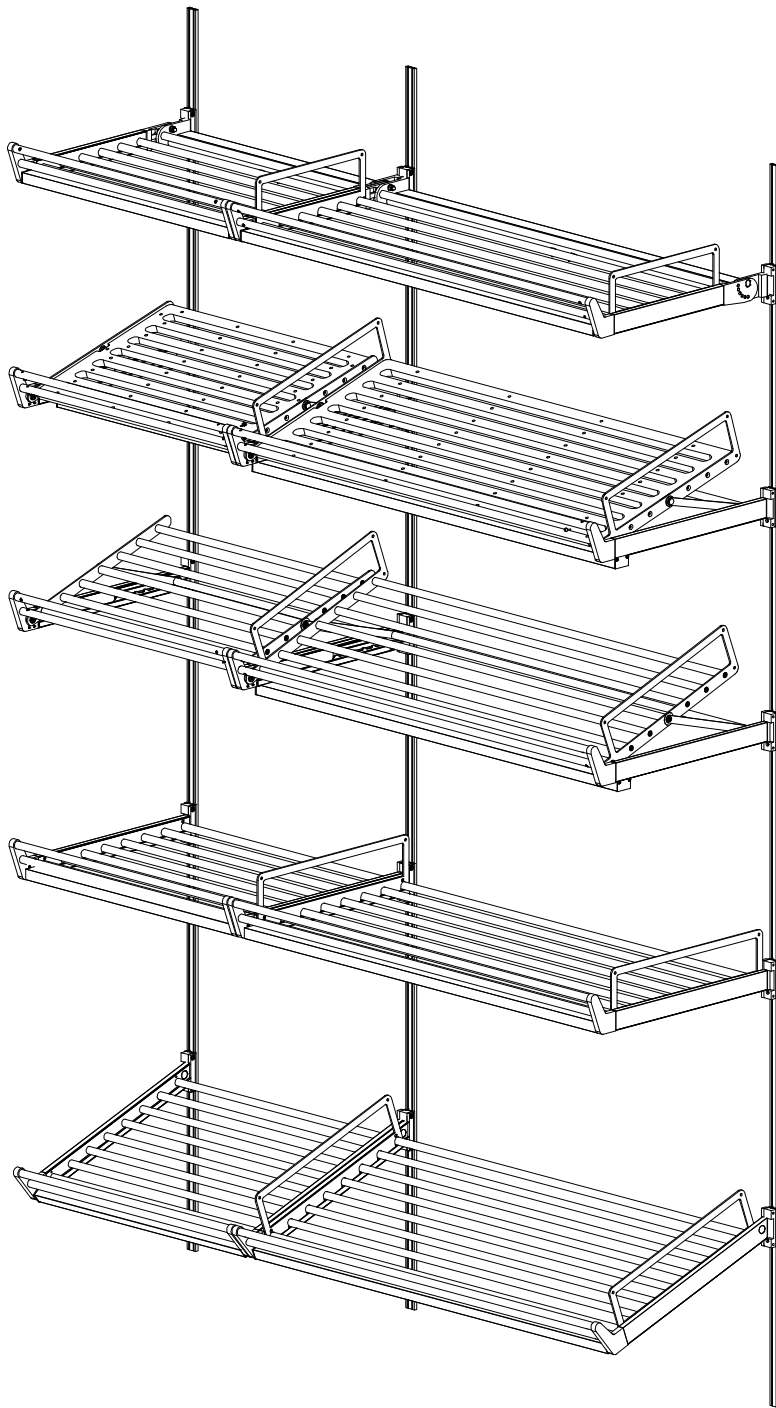


Product characteristics

- flexible system for individual construction of bread gratings
- axle dimension up to 1000 mm
- shelf out of aluminum or wood
- front or rear slope
- wall connection for key rail and punched rail
- covered cables
- optional reeling
- easy adjustable during the staff
- baguette presentation
- rails of breadgrating only in black available

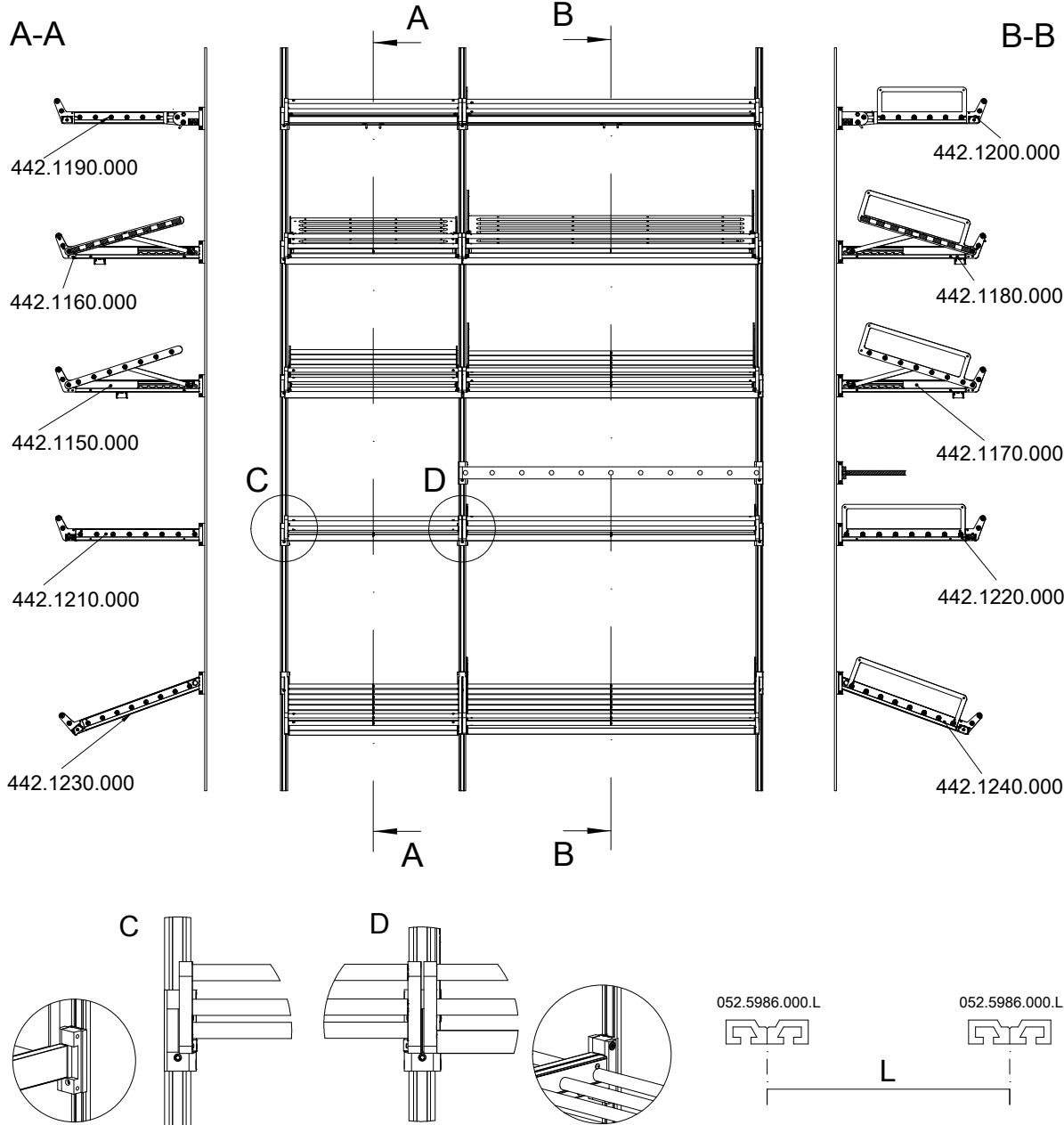
Notice: wooden panel will be mounted on the operator side



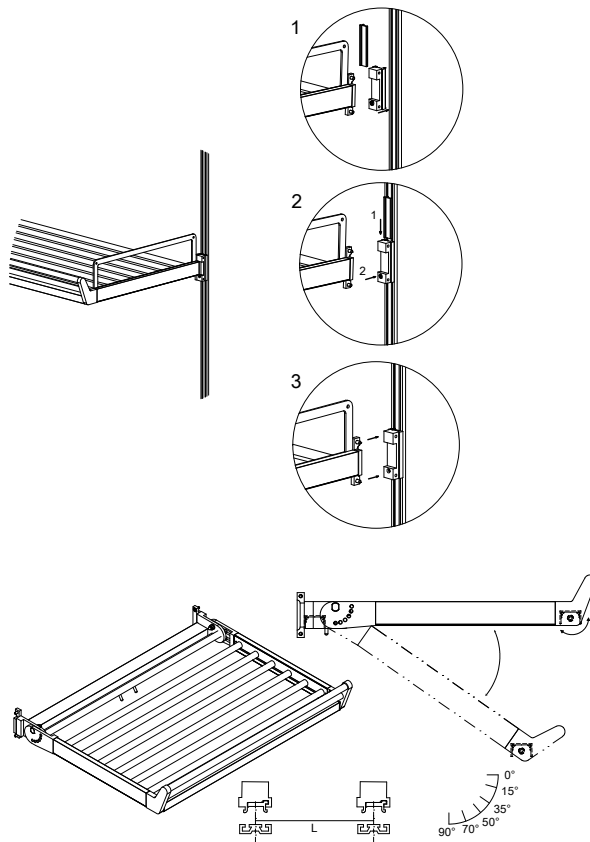


Planning information

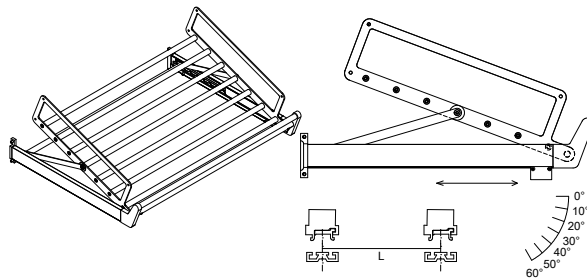
possible variants with key rail



When ordering, specify the axle dimension.

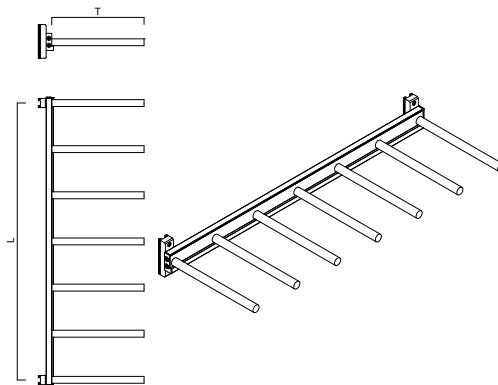


possible variants of the angle adjustment on the wall side



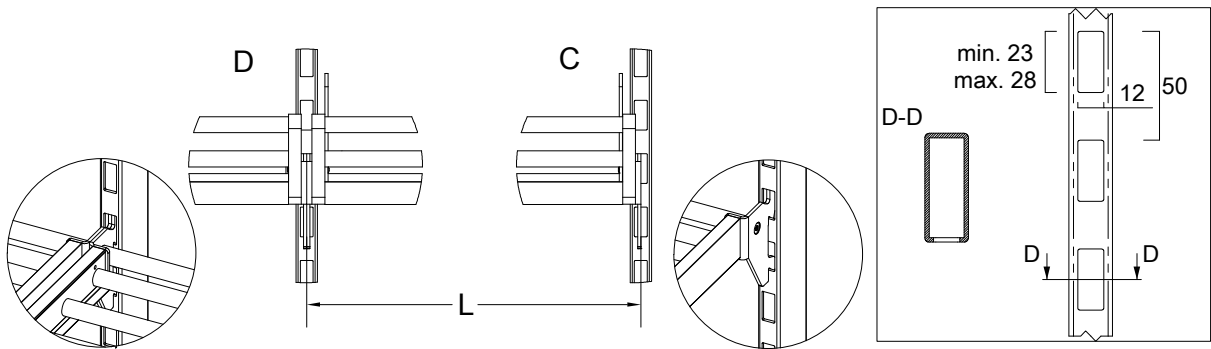
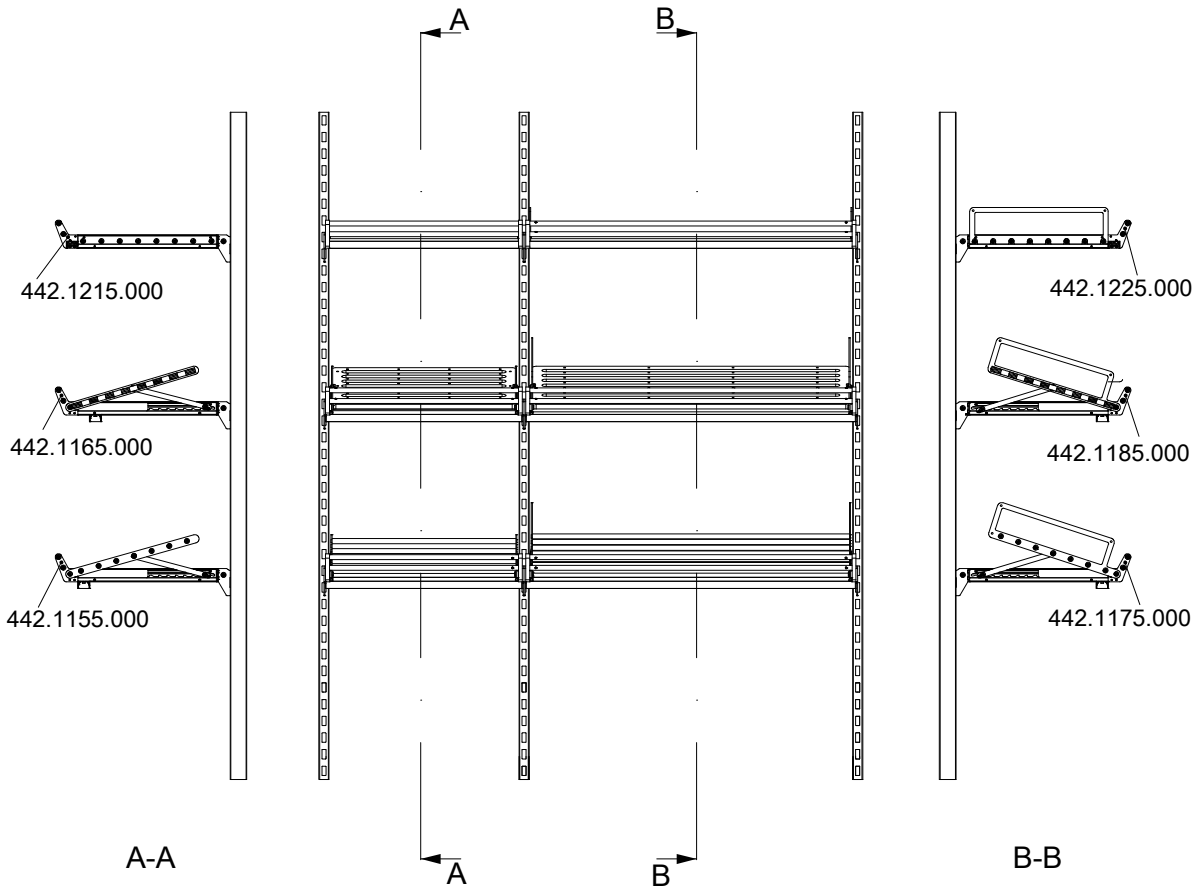
possible variants of the angle adjustment on the operator side

deep= 200-300 mm



baguette holder

possible variants with punched rail



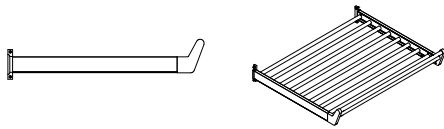
When ordering, specify the axle dimensions

Bread grating 3

Picture

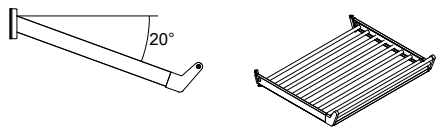
Product

Part number



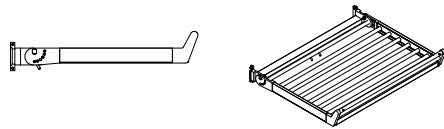
Bread grating 3 for key rail
axe dimension acc. to requirement

17.442.1210.XXX.1000



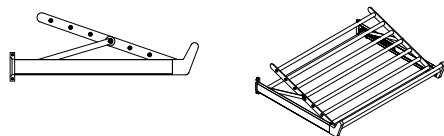
Bread grating 3 for key rail 20°
axe dimension acc. to requirement

17.442.1230.XXX.1000



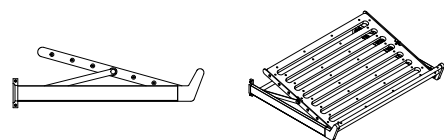
Bread grating 3 for key rail slope on wall side
axe dimension acc. to requirement

17.442.1190.XXX.1000



Bread grating for key rail front slope
axe dimension acc. to requirement

17.442.1150.XXX.1000

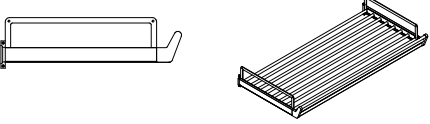
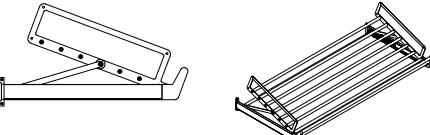
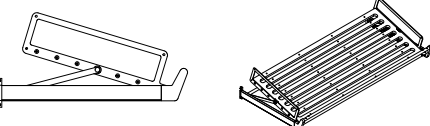


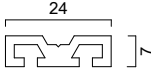
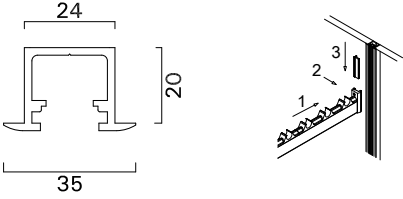
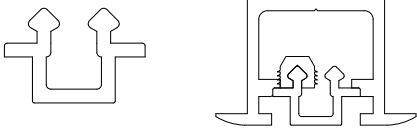
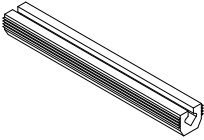
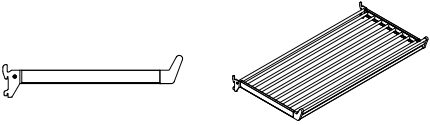
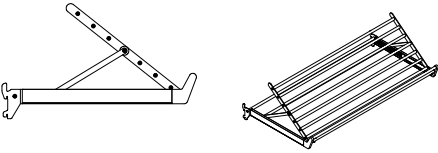
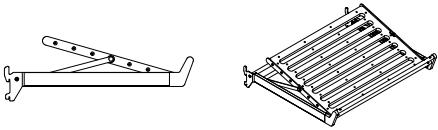
Bread grating for key rail
front slope or wall side

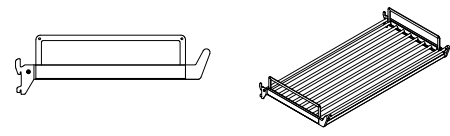
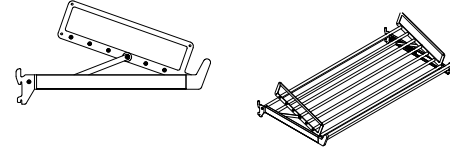
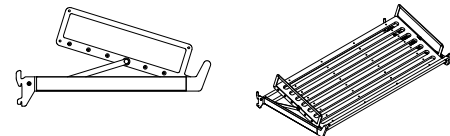
17.442.1160.XXX.1000

axe dimension acc. to requirement

The Various with
wooden plank is with/ without
rail available.

Picture	Product	Part number
	<p>Bread grating for key rail 0° with rail axe dimension acc. to requierement</p>	<p>17.442.1220.XXX.1000</p>
	<p>Breas grating 3 for key rail 20° with rail axe dimension acc. to requierement</p>	<p>17.442.1240.XXX.1000</p>
	<p>Bread grating 3 for key rail slope on wall side with rail axe dimension acc. to requierement</p>	<p>17.442.1200.XXX.1000</p>
	<p>Bread grating for key rail front slope with rail axe dimension acc. to requierement</p>	<p>17.442.1170.XXX.1000</p>
	<p>Bread grating for key rail for wooden plank axe dimension acc. to requierement</p>	<p>17.442.1180.XXX.1000</p>
	<p>Bread grating 3, baguette holder axe dimension acc. to requirement</p>	<p>will follow</p>
	<p>Connector for key rail</p>	<p>442.1146.XXX</p>

Picture	Product	Part number
	Key rail profile	5000mm 19.052.5986.XXX
	Key rail Observe the assembly sequence: Function only in connection with cover profile 17.052.5995.XXX and Clip 17.045.1076.087	17.052.5991.XXX
	Cover profile	17.052.5995.XXX
	Clip, plastic for fixing of cover profile price tag rail abt. 4 pcs.per meter	50mm 17.045.1076.087
	Bread grating 3 for punched rail 0°	17.442.1215.XXX.1000
	Bread grating 3 for punched rail front slope	17.442.1155.XXX.1000
	Bread grating 3 for punched rail with front slope for wooden plank	17.442.1165.XXX.1000

Picture	Product	Part number
	<p>Bread grating 3 for punched rail with railing</p>	<p>17.442.1225.XXX.1000</p>
	<p>Bread grating 3 for punched rail front slope with railing</p>	<p>17.442.1175.XXX.1000</p>
	<p>Bread grating 3 for punched rail front slope for wooden plank with railing</p>	<p>17.442.1185.XXX.1000</p>